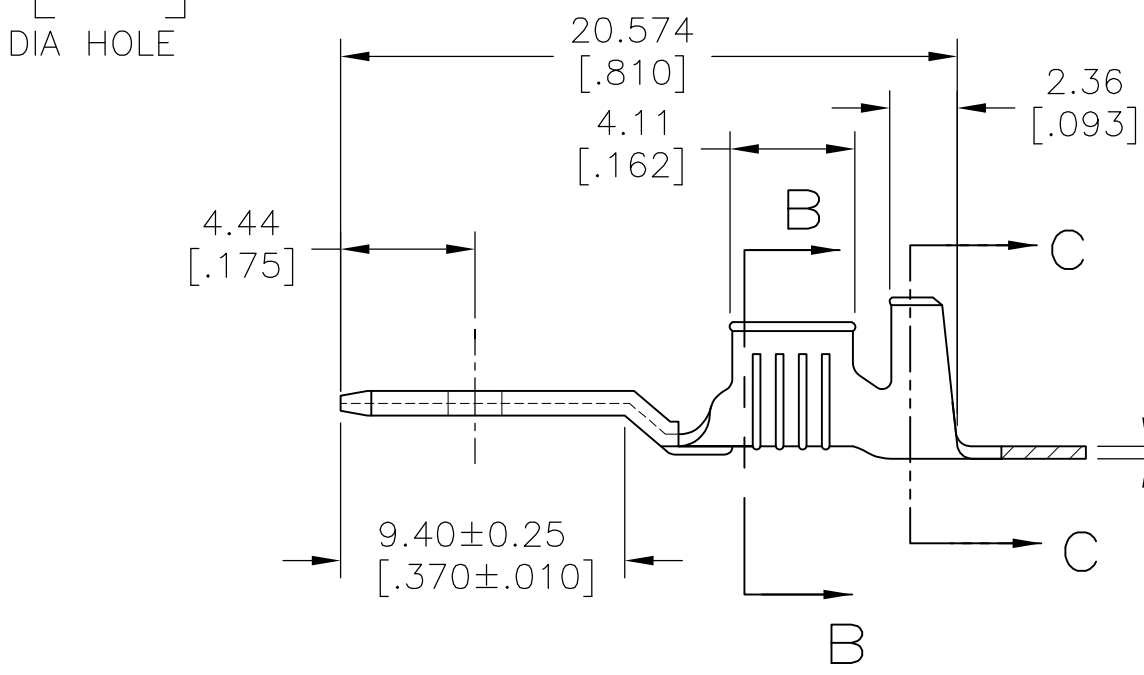
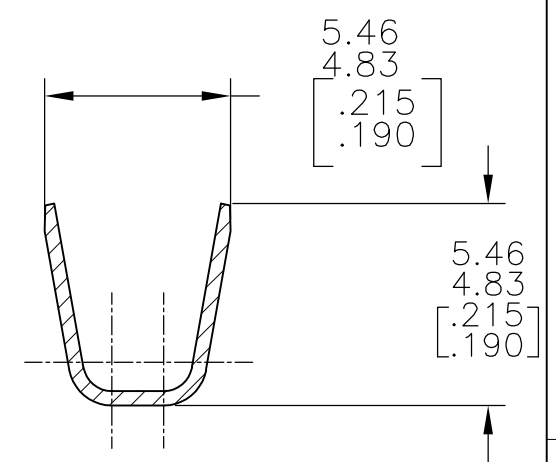
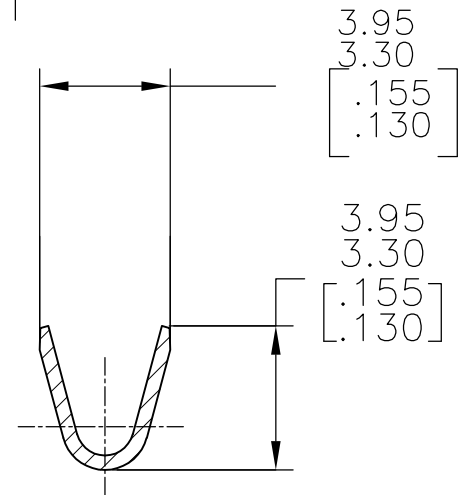
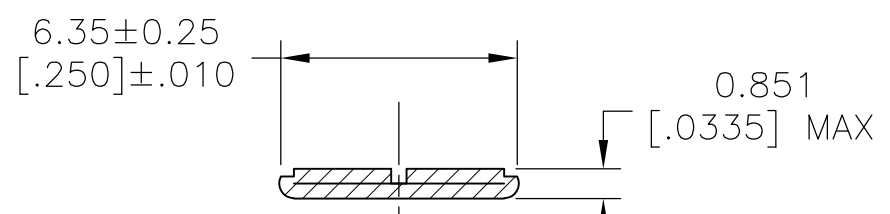
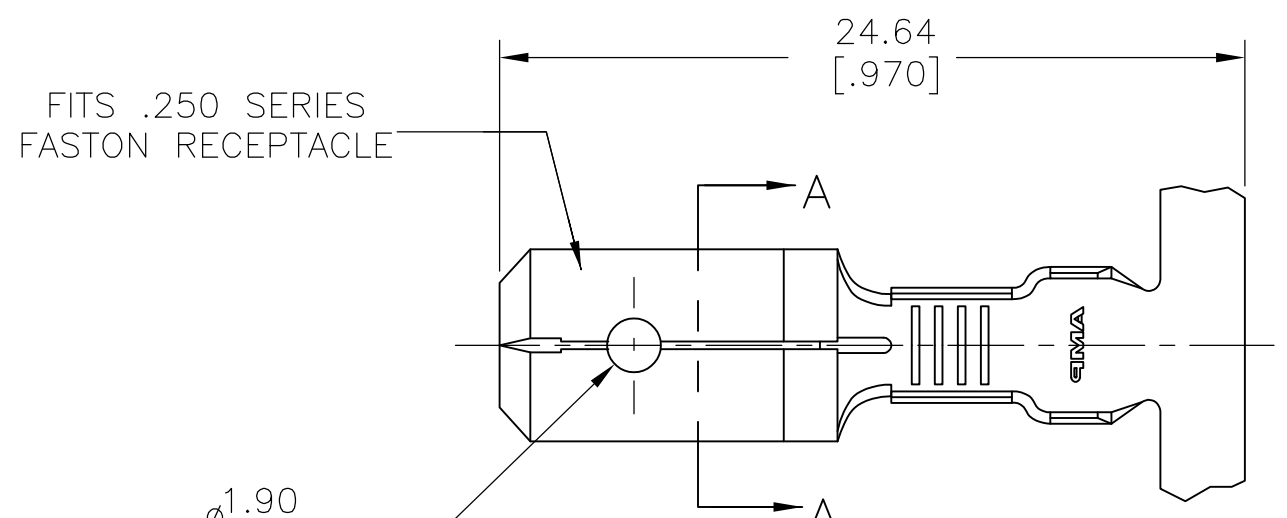


THIS DRAWING IS UNPUBLISHED. RELEASED FOR PUBLICATION
 © COPYRIGHT - By - ALL RIGHTS RESERVED.

LOC	DIST	REVISIONS					
AF	50	P	LTR	DESCRIPTION	DATE	DWN	APVD
			V	REVISED PER ECR-13-011489	06DEC2013	KH	PD



6	4	TIN			42474-7
5		-			42474-6
5		SILVER .000120 MIN	2.794-3.81		42474-5
4		TIN	[.110-.150]	18-14 AWG	42474-4
3		-	DIA		42474-3
		TIN			42474-2
5		-			42474-1
FINISH		INSULATION RANGE		WIRE SIZE	PART NO

- 1 CONTINUOUS STRIP ON REELS.
- 2 FEED TO BE .540#.005.
- 3 REVERSED REEL OF 42474-1.
- 4 REVERSED REEL OF 42474-2.
- 5 FOREIGN PRODUCTION ONLY.
- 6 LUBRICANT APPLIED AFTER TIN PLATING.

THIS DRAWING IS A CONTROLLED DOCUMENT.		DWN	JR RUTH	1/31/91	STE TE Connectivity		
		CHK	MS FEHER	1/31/91			
DIMENSIONS: mm [INCHES]		APVD		C MEYERS	NAME		
TOLERANCES UNLESS OTHERWISE SPECIFIED:		PRODUCT SPEC		-	TAB, FASTON™ .250 SERIES		
0 PLC ± -		APPLICATION SPEC		-	SIZE	CAGE CODE	DRAWING NO
1 PLC ± -		WEIGHT		-	A3	00779	C-42474
2 PLC ± -		CUSTOMER DRAWING		SCALE		SHEET	REV
3 PLC ± .015				4:1		1 OF 1	V
4 PLC ± -							
ANGLES ± -							
FINISH							
SEE TABLE							